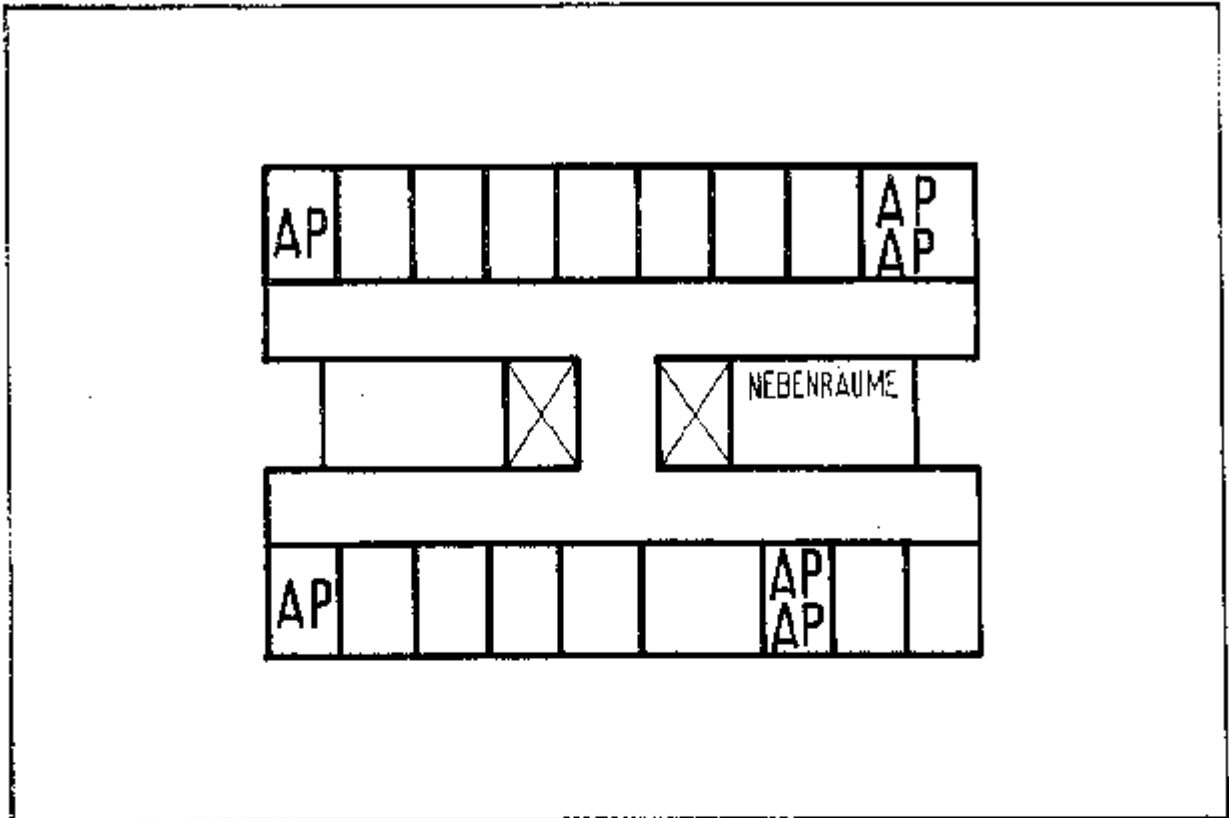
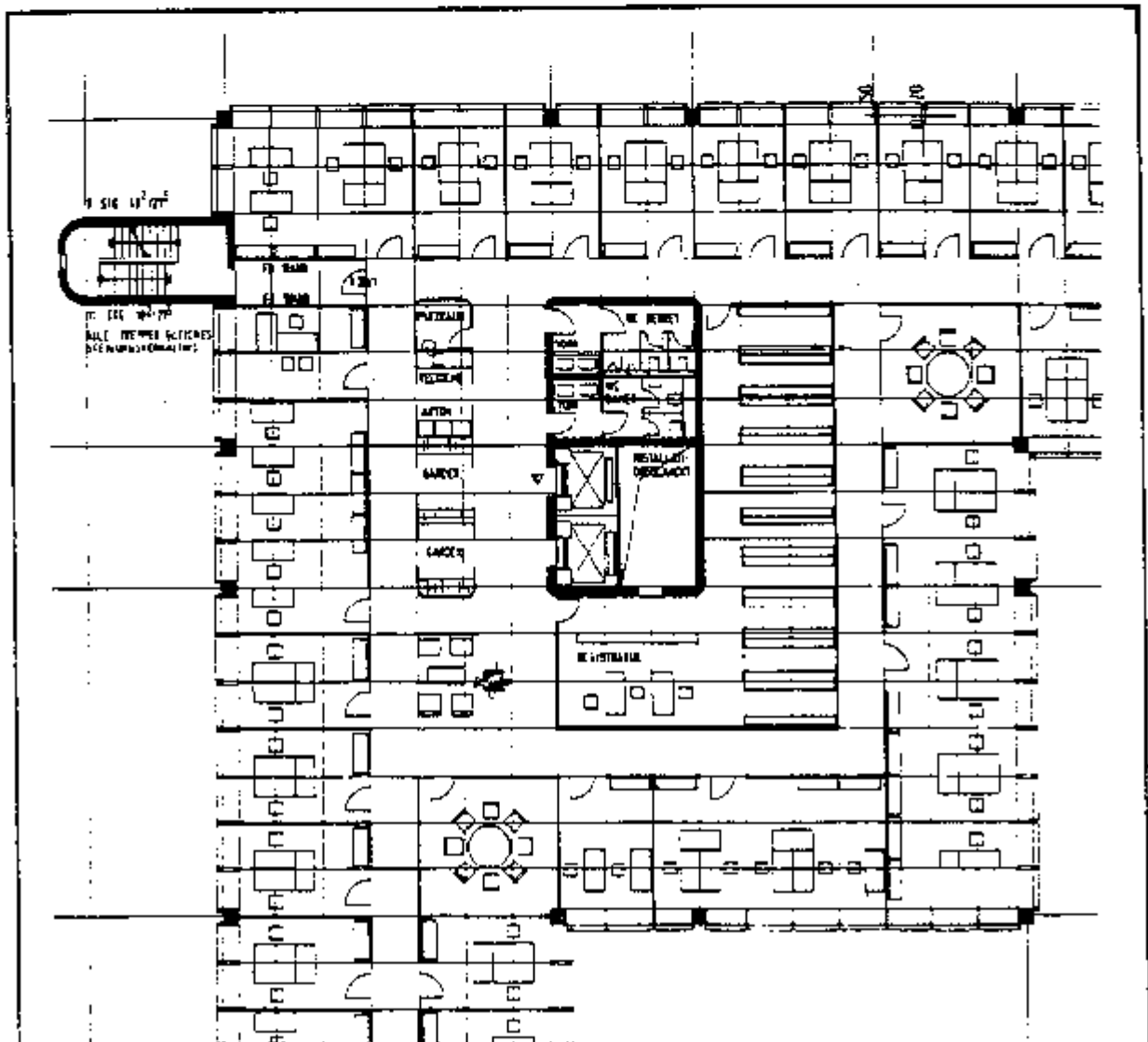
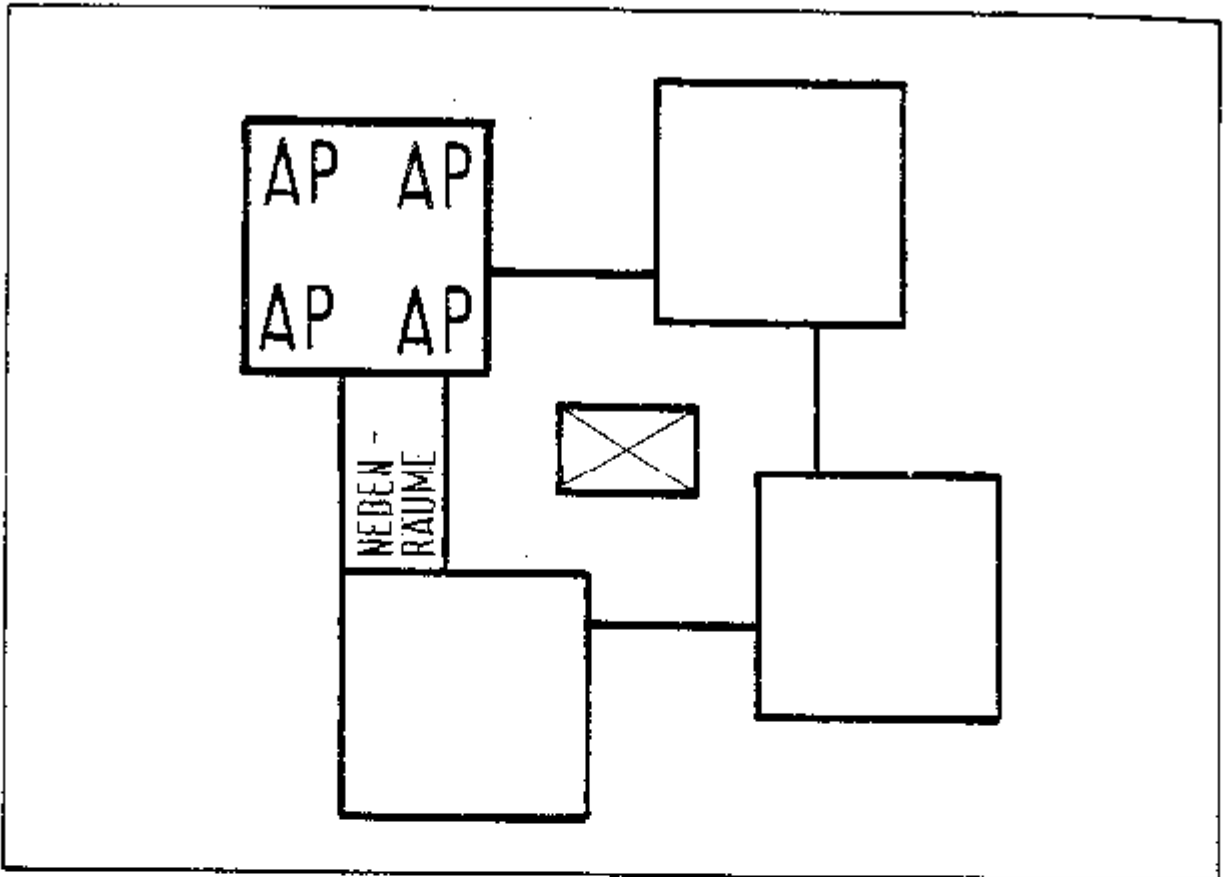


Zellenbüros

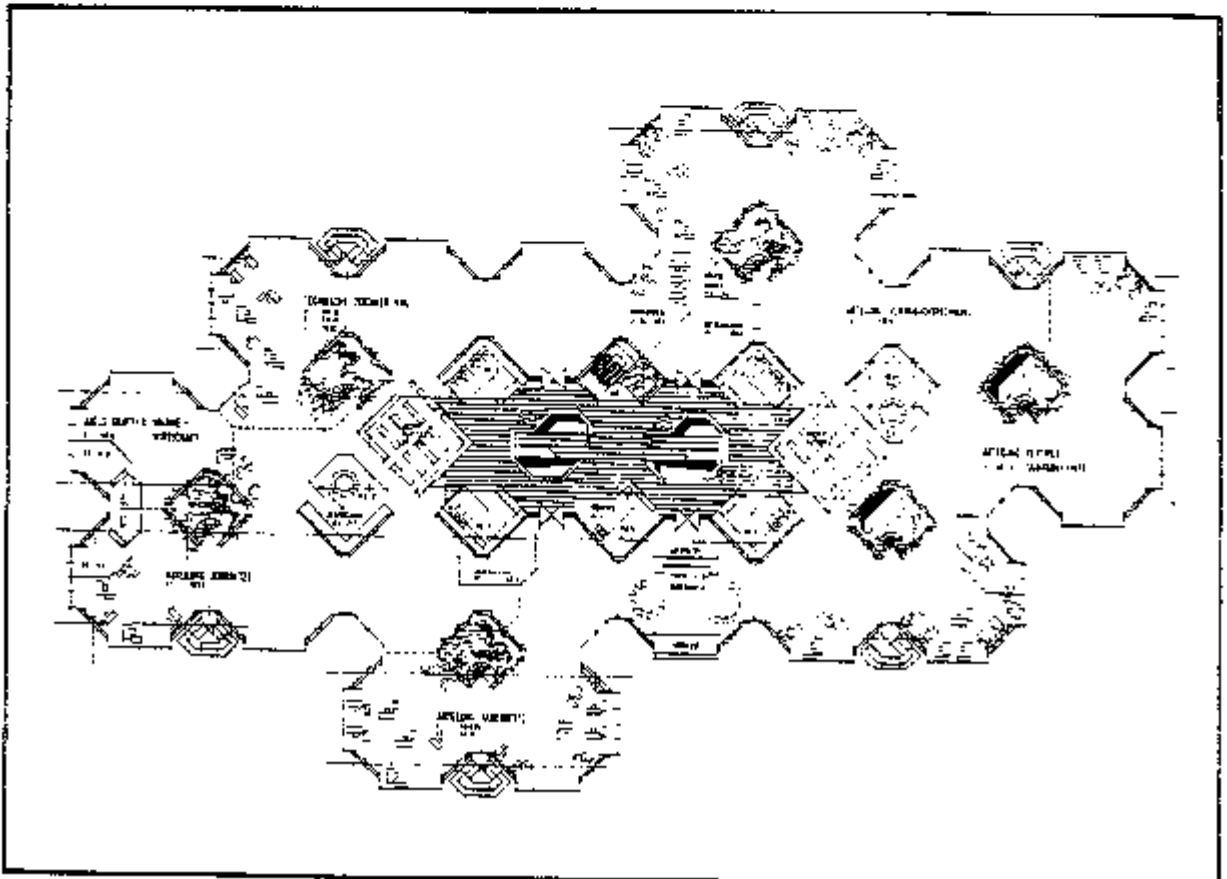


Schemabild: Zellenbüro



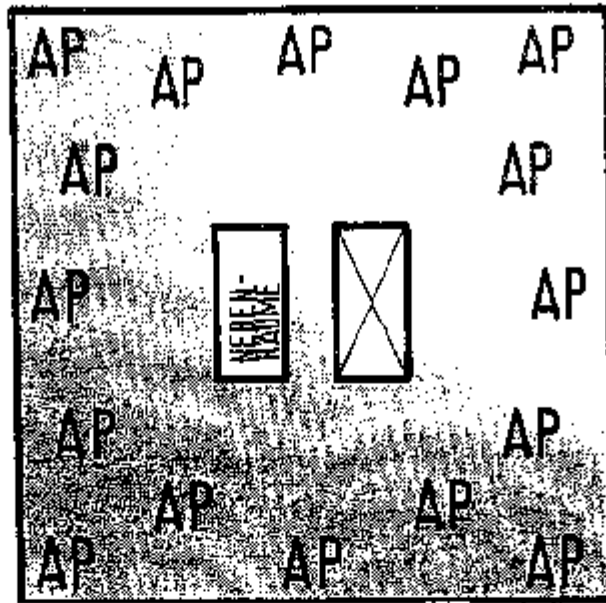


Schemabild Gruppenbüro

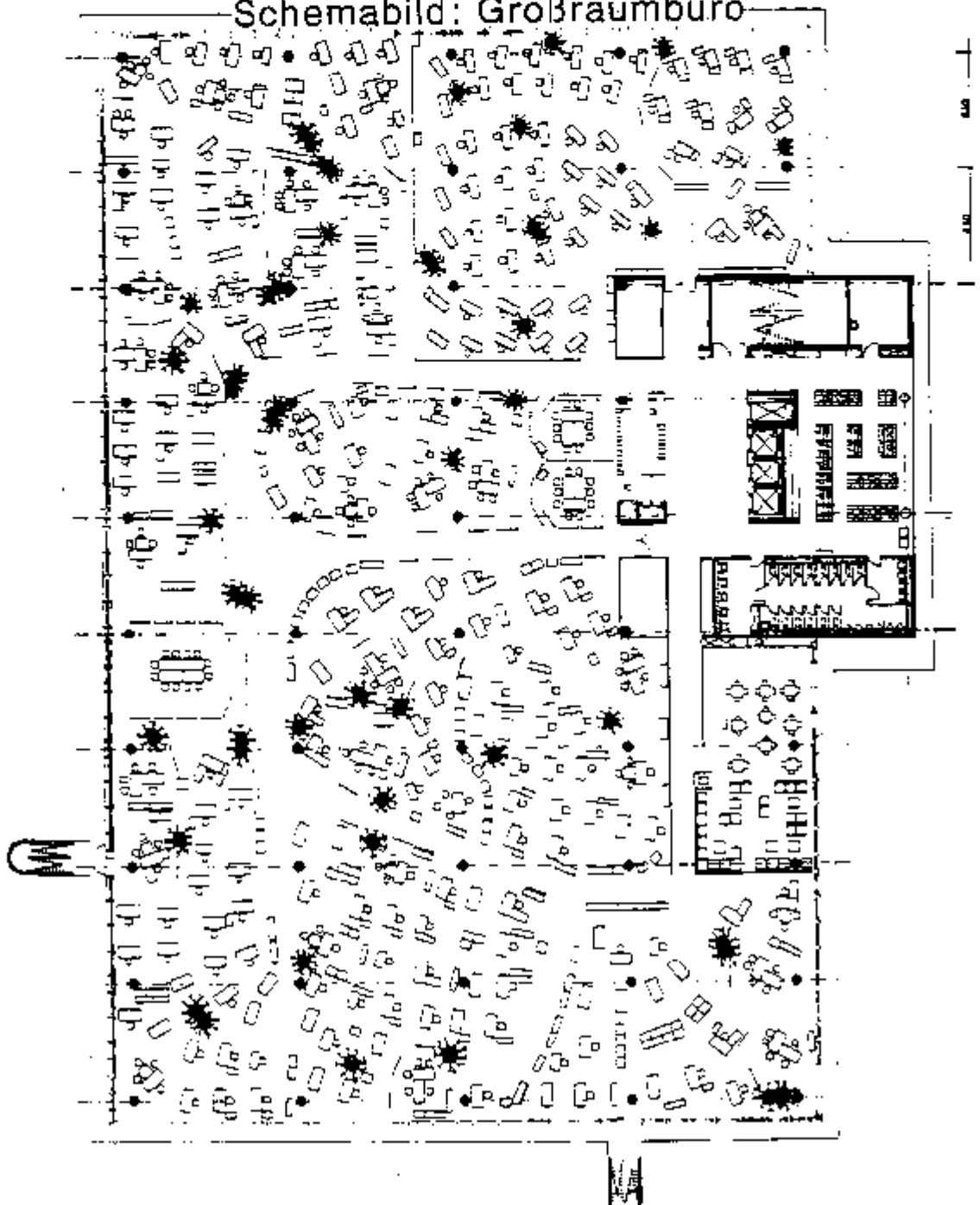


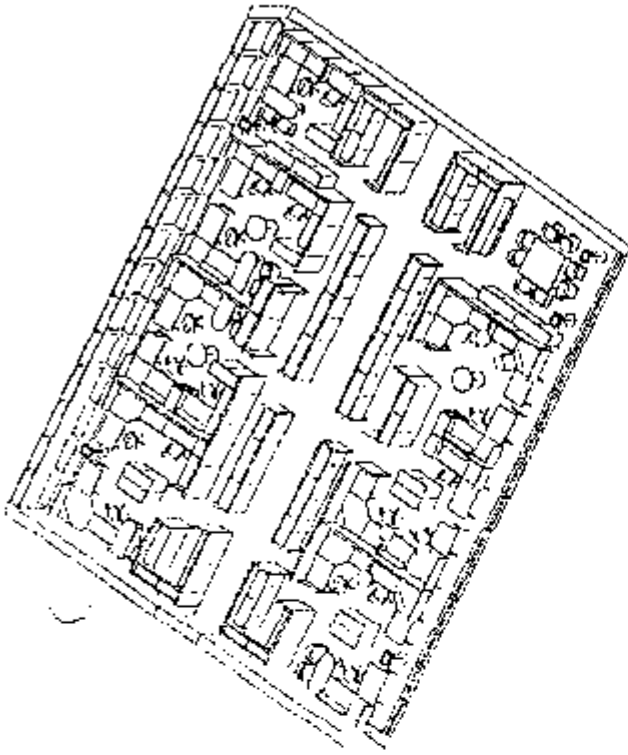
Bürraumnutzung als Gruppenräume

Großraumbüro

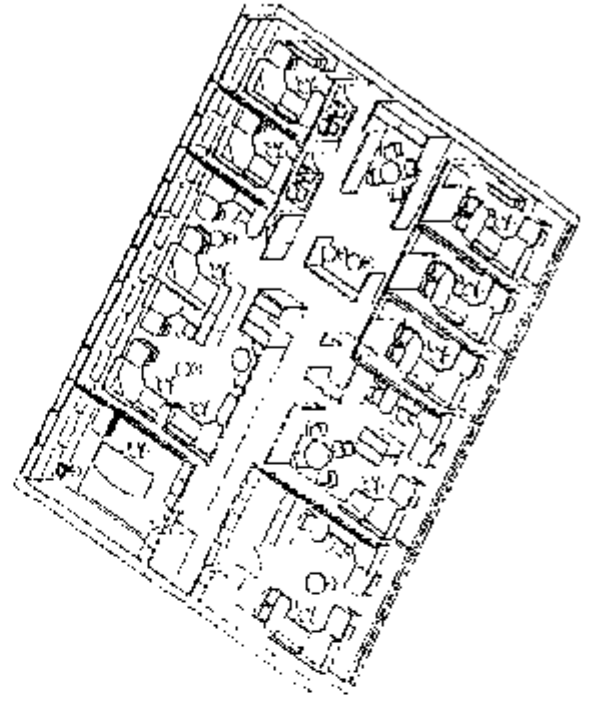


Schemabild: Großraumbüro

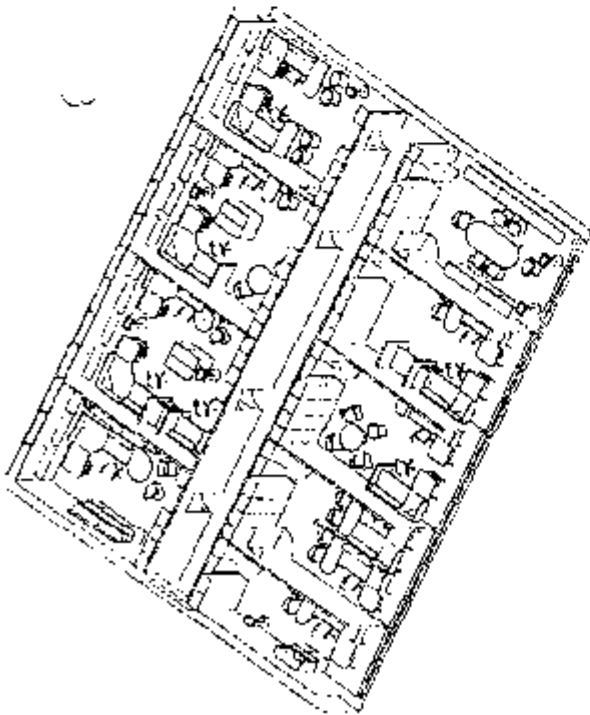




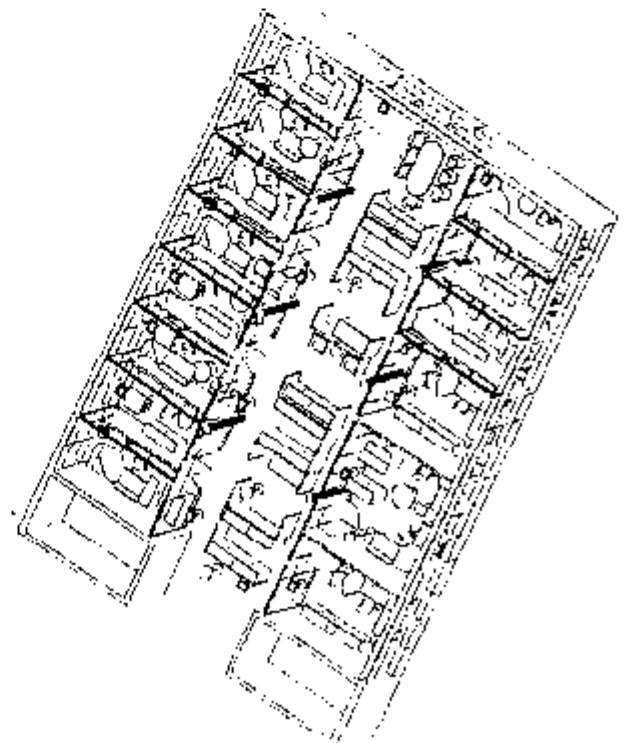
Das Gruppenbüro



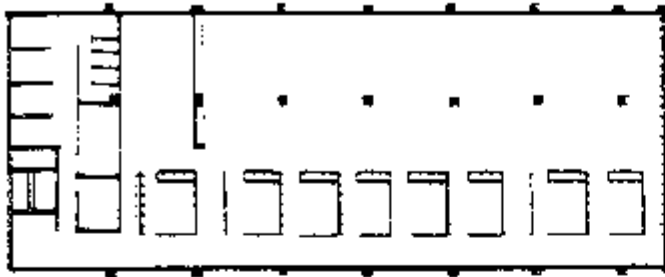
Büromischform



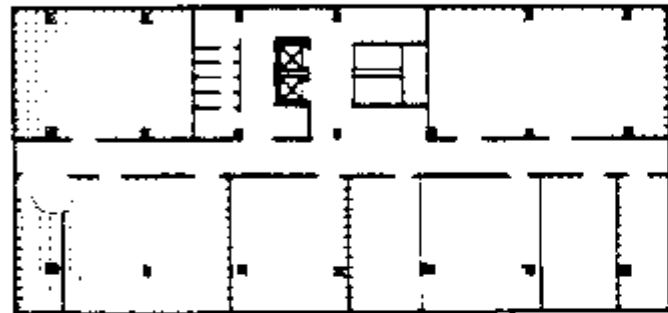
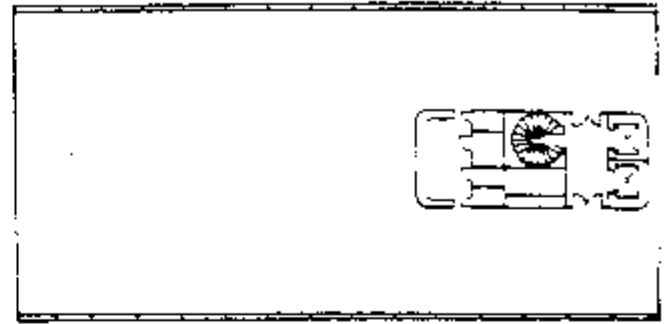
Das Zellenbüro



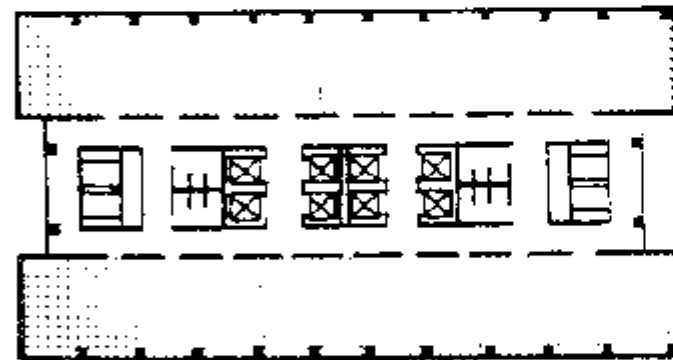
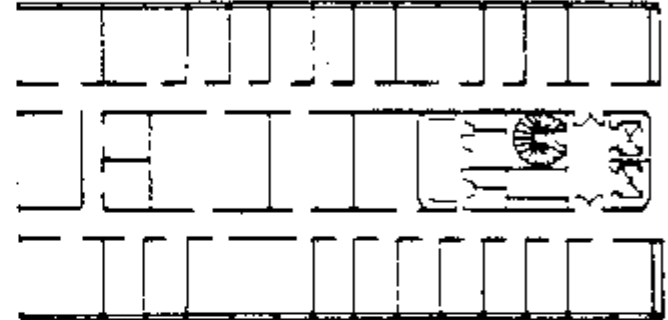
Das Kombi-Büro



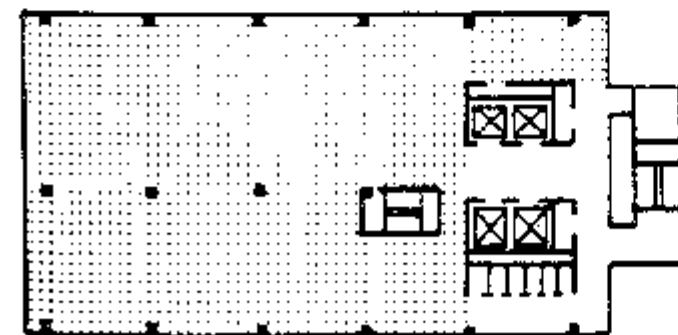
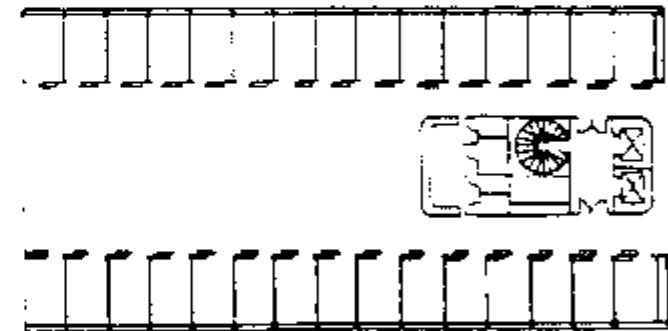
3 Einbündige Anlage wirtschaftlich durch sehr tiefe Büroräume



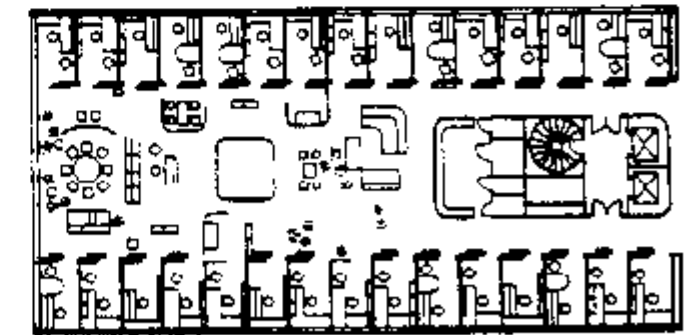
4 Zweibündige Anlage



5 Dreibündige Anlage



6 Flurlose Anlage



7 Erster Entwurf für ein Kombi-Büro: ESAB Hauptverwaltung. Tenbom Architekt AB, Stockholm 1976; Ausbauvarianten: Großraum, Gruppenraum Zellenbüros, Kombi-Büro